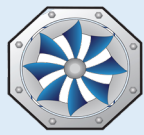


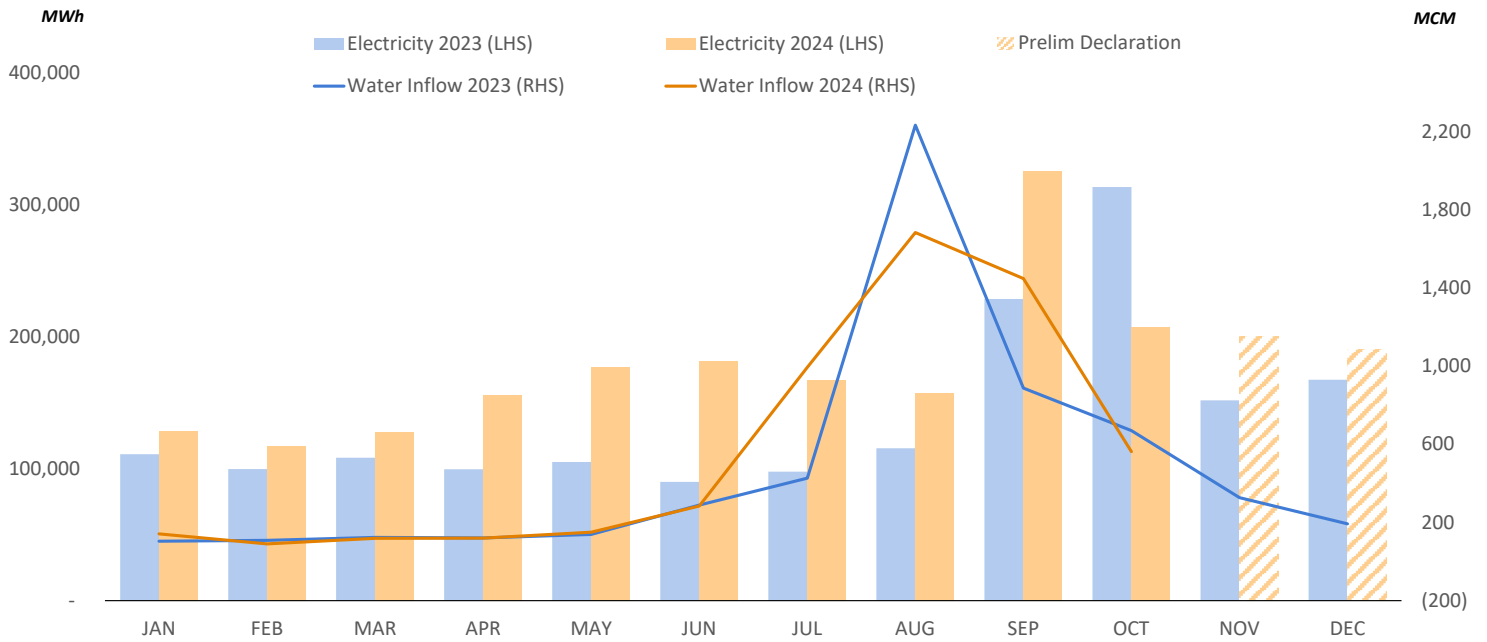
ENERGY TRANSITION

OUR VISION
SINCE DAY ONE

OPERATING STATISTICS
OCTOBER 2024



NAM NGUM 2 HYDROELECTRIC POWER PLANT



2023	JAN	FEB	MAR	APR	MAY	JUN	JUL	AUG	SEP	OCT	NOV	DEC	10M 2023	TOTAL
PE (MWh)	111,000	99,752	108,270	99,600	105,000	90,000	97,742	110,475	214,403	248,000	151,842	167,390	1,284,242	1,603,474
SE (MWh)	-	-	-	-	-	-	-	4,979	11,180	65,435	-	-	81,594	81,594
EE (MWh)	-	-	-	-	-	-	-	-	-	-	-	-	-	-
TE (MWh)	-	-	-	-	-	-	-	-	3,076	-	-	-	3,076	3,076
TOTAL (MWh)	111,000	99,752	108,270	99,600	105,000	90,000	97,742	115,454	228,660	313,435	151,842	167,390	1,368,912	1,688,144
Water Inflow (MCM)	104	108	124	121	139	289	427	2,232	887	670	326	193	5,100	5,619
Reservoir Level (MASL)	356	355	353	350	346	345	347	369	372	371	370	367		

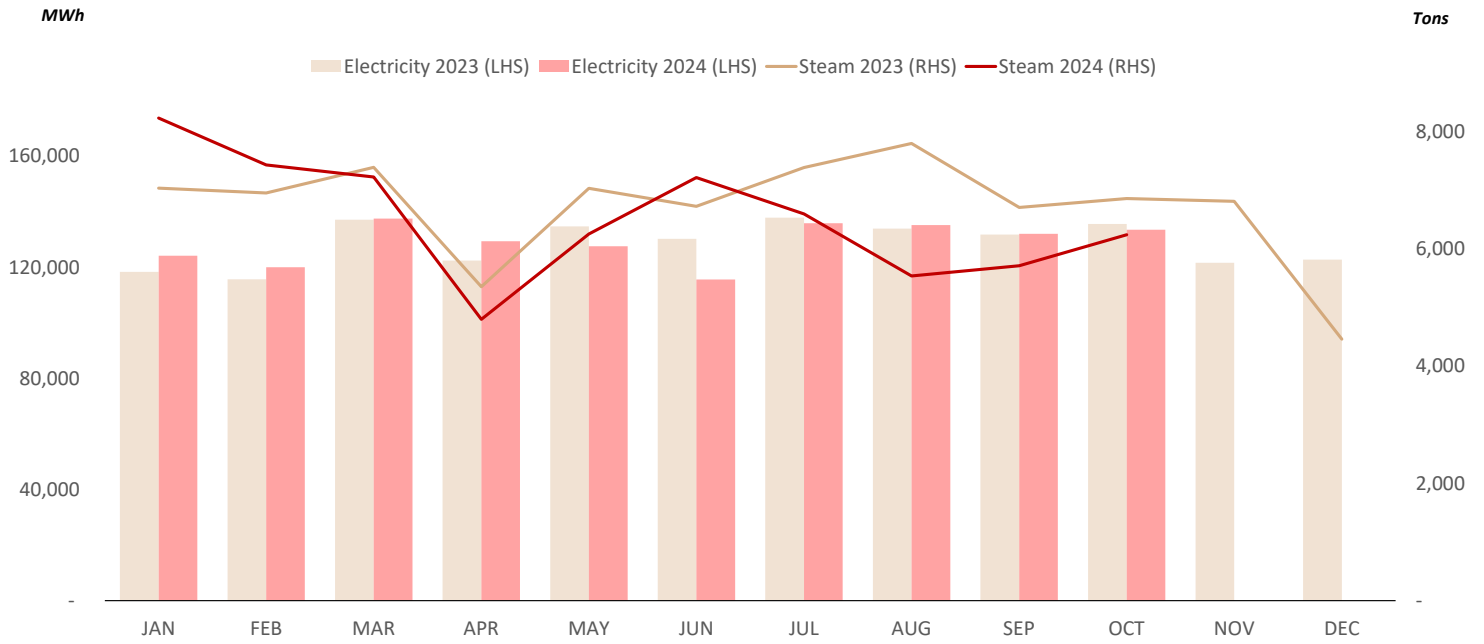
2024	JAN	FEB	MAR	APR	MAY	JUN	JUL	AUG	SEP	OCT	NOV	DEC	10M 2024	TOTAL
PE (MWh)	128,145	117,033	127,839	155,787	176,744	181,755	167,344	145,251	213,382	199,602	-	-	1,612,882	
SE (MWh)	-	-	-	-	-	-	-	12,239	-	7,947	-	-	20,186	
EE (MWh)	-	-	-	-	-	-	-	-	108,062	-	-	-	108,062	
TE (MWh)	-	-	-	-	-	-	-	-	4,321	-	-	-	4,321	
TOTAL (MWh)	128,145	117,033	127,839	155,787	176,744	181,755	167,344	157,491	325,766	207,549	-	-	1,745,452	
Water Inflow (MCM)	142	90	119	120	150	284	993	1,683	1,447	562	-	-	5,592	
Reservoir Level (MASL)	367	365	362	356	351	348	354	368	374	374	-	-		

% YoY Change	JAN	FEB	MAR	APR	MAY	JUN	JUL	AUG	SEP	OCT	NOV	DEC	10M 2024	TOTAL
Electricity	15.4%	17.3%	18.1%	56.4%	68.3%	102.0%	71.2%	36.4%	42.5%	(33.8%)	-	-	27.5%	
Water Inflow	36.4%	(16.4%)	(3.9%)	(0.5%)	7.8%	(1.4%)	132.7%	(24.6%)	63.2%	(16.0%)	-	-	9.6%	

(1) LHS = Left-hand Side, RHS = Right-hand Side



BANGPA-IN COGENERATION POWER PLANT



2023	JAN	FEB	MAR	APR	MAY	JUN	JUL	AUG	SEP	OCT	NOV	DEC	10M 2023	TOTAL
Electricity (MWh)	118,367	115,701	137,109	122,418	134,714	130,237	137,891	133,943	131,766	135,576	121,599	122,737	1,297,723	1,542,060
Steam (Tons)	7,033	6,952	7,387	5,353	7,031	6,724	7,385	7,796	6,705	6,857	6,810	4,459	69,223	80,492

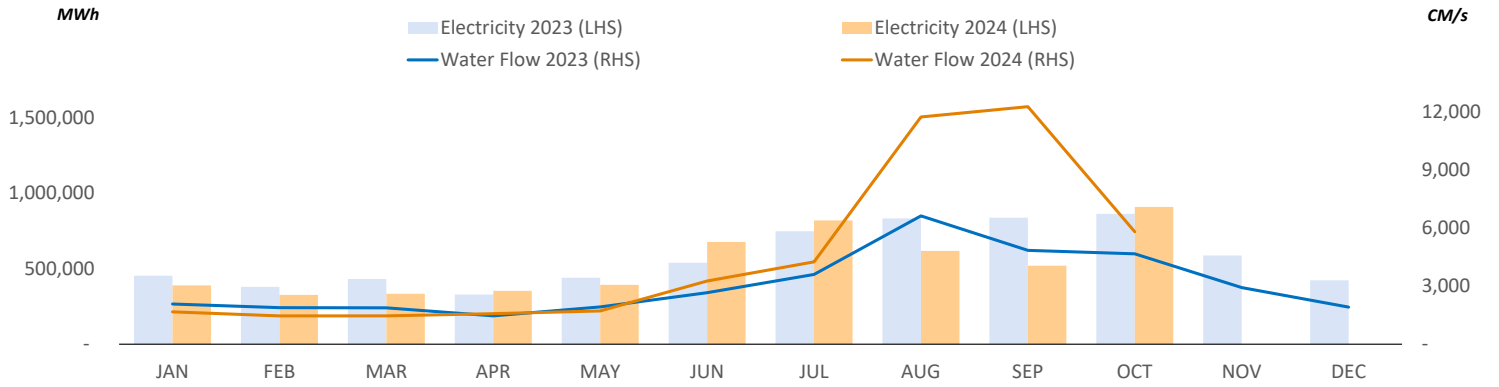
2024	JAN	FEB	MAR	APR	MAY	JUN	JUL	AUG	SEP	OCT	NOV	DEC	10M 2024	TOTAL
Electricity (MWh)	124,176	120,036	137,502	129,391	127,598	115,591	135,840	135,186	132,027	133,524			1,290,871	
Steam (Tons)	8,229	7,430	7,224	4,797	6,252	7,213	6,593	5,537	5,711	6,238			65,224	

% YoY Change	JAN	FEB	MAR	APR	MAY	JUN	JUL	AUG	SEP	OCT	NOV	DEC	10M 2024	TOTAL
Electricity	4.9%	3.7%	0.3%	5.7%	(5.3%)	(11.2%)	(1.5%)	0.9%	0.2%	(1.5%)			(0.5%)	
Steam	17.0%	6.9%	(2.2%)	(10.4%)	(11.1%)	7.3%	(10.7%)	(29.0%)	(14.8%)	(9.0%)			(5.8%)	

(1) LHS = Left-hand Side, RHS = Right-hand Side



XAYABURI HYDROELECTRIC POWER PLANT



2023	JAN	FEB	MAR	APR	MAY	JUN	JUL	AUG	SEP	OCT	NOV	DEC	10M 2023	TOTAL
PE (MWh)	267,050	217,151	247,055	198,482	252,534	310,827	416,051	448,011	469,595	488,984	337,132	261,190	3,315,740	3,914,061
SE (MWh)	88,986	74,144	92,982	61,472	95,169	117,317	156,436	172,655	182,109	191,388	119,740	57,601	1,232,659	1,410,000
EE (MWh)	98,262	88,030	90,585	68,881	91,756	107,743	155,399	174,411	167,144	165,923	115,542	102,790	1,208,133	1,426,465
TE (MWh)	-	-	425	-	-	-	-	-	-	-	7,913	-	425	8,338
EGAT TOTAL (MWh)	454,299	379,326	431,047	328,835	439,459	535,887	727,886	795,076	818,847	846,295	580,327	421,581	5,756,957	6,758,864
EDL (MWh)	-	595	811	189	1,766	4,034	20,996	38,315	19,703	17,616	8,118	2,315	104,026	114,458
GRAND TOTAL (MWh)	454,299	379,921	431,858	329,024	441,225	539,921	748,882	833,391	838,550	863,911	588,444	423,896	5,860,982	6,873,322
Monthly Avg Water Flow (CM/s)	2,075	1,886	1,873	1,462	1,921	2,656	3,595	6,617	4,840	4,665	2,918	1,912	3,159	3,035

2024	JAN	FEB	MAR	APR	MAY	JUN	JUL	AUG	SEP	OCT	NOV	DEC	10M 2024	TOTAL
PE (MWh)	232,771	204,728	199,752	202,858	228,634	387,768	473,680	360,925	259,736	515,604			3,066,457	
SE (MWh)	77,294	53,728	61,673	77,032	77,064	128,755	166,661	96,463	42,074	202,864			983,607	
EE (MWh)	79,517	68,975	66,324	71,108	80,689	152,945	167,116	132,362	190,931	164,454			1,174,422	
TE (MWh)	-	-	761	-	-	-	889	-	-	-			1,650	
EGAT TOTAL (MWh)	389,582	327,430	328,510	350,997	386,387	669,469	808,347	589,750	492,741	882,922			5,226,135	
EDL (MWh)	937	95	6,239	2,373	6,742	8,174	12,792	28,324	27,987	27,643			121,306	
GRAND TOTAL (MWh)	390,520	327,526	334,749	353,370	393,129	677,643	821,138	618,073	520,729	910,565			5,347,441	
Monthly Avg Water Flow (CM/s)	1,670	1,460	1,462	1,572	1,715	3,255	4,245	11,720	12,250	5,804			4,515	

PE Account 2024 (MWh)		SE Account 2024 (MWh)	
Beginning	-	Beginning	118,664
Added (+)	-	Added (+)	-
Used (-)	-	Used (-)	-
Ending	-	Ending	118,664

% YoY Change	JAN	FEB	MAR	APR	MAY	JUN	JUL	AUG	SEP	OCT	NOV	DEC	10M 2024	TOTAL
Electricity	(14.0%)	(13.8%)	(22.5%)	7.4%	(10.9%)	25.5%	9.6%	(25.8%)	(37.9%)	5.4%			(8.8%)	
Water Inflow	(19.5%)	(22.6%)	(21.9%)	7.5%	(10.7%)	22.6%	18.1%	77.1%	153.1%	24.4%			42.9%	

(1) LHS = Left-hand Side, RHS = Right-hand Side

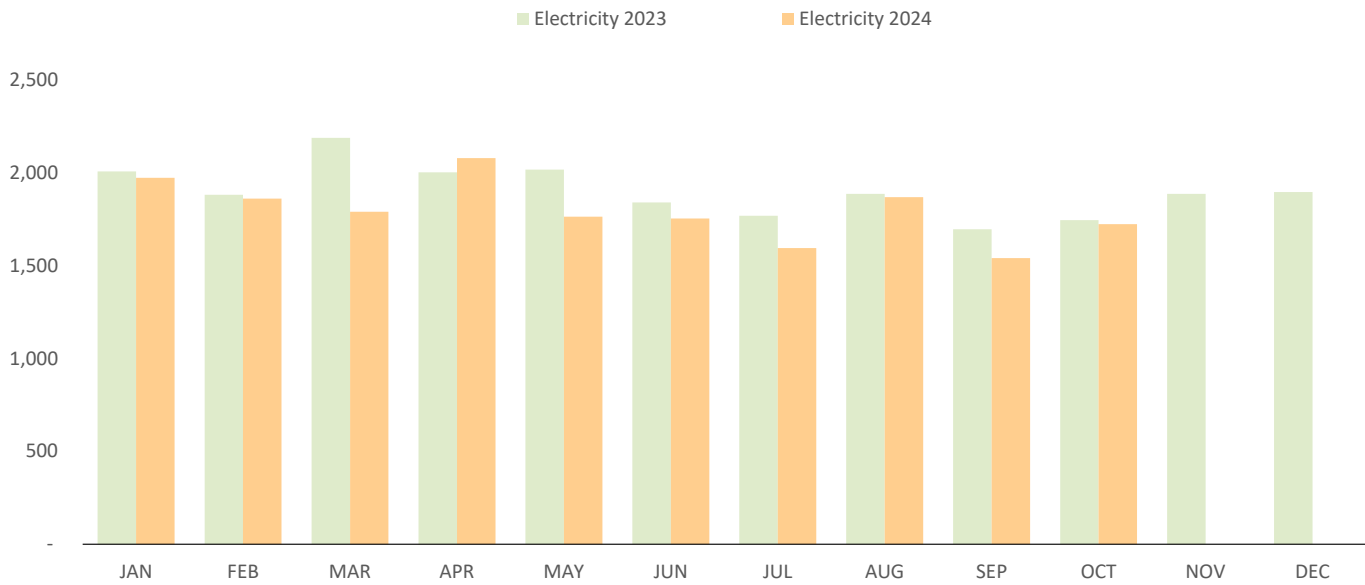
Note: Due to high water flow from heavy rainfall in Lao PDR, XPCl temporarily suspended its electricity production for approximately 217 hours during 21-30 August 2024 and 150 hours during 11-17 September 2024 in accordance with its normal operating procedure.





BANGKHENCHAI SOLAR POWER PLANT

MWh



2023	JAN	FEB	MAR	APR	MAY	JUN	JUL	AUG	SEP	OCT	NOV	DEC	10M 2023	TOTAL
Electricity (MWh)	2,007	1,881	2,187	2,002	2,017	1,840	1,768	1,886	1,695	1,744	1,885	1,896	19,026	22,807

2024	JAN	FEB	MAR	APR	MAY	JUN	JUL	AUG	SEP	OCT	NOV	DEC	10M 2024	TOTAL
Electricity (MWh)	1,972	1,861	1,789	2,078	1,763	1,753	1,594	1,868	1,540	1,722			17,942	

% YoY Change	JAN	FEB	MAR	APR	MAY	JUN	JUL	AUG	SEP	OCT	NOV	DEC	10M 2024	TOTAL
Electricity	(1.7%)	(1.1%)	(18.2%)	3.8%	(12.6%)	(4.7%)	(9.8%)	(1.0%)	(9.1%)	(1.2%)			(5.7%)	

(1) Included electricity production from new solar rooftop and farm power plants under BKC.